



GASTIGHT ACCESS COVERS

SPECIFICATIONS

- All covers and frames are manufactured from grade T220 cast iron (minimum) to conform to AS1830 – 1976.

Castings are machined to form a gas and watertight seal.

Once assembled, all units are coated in a bituminous paint complying with BS3416 type II.

All of Mascot's covers are manufactured in accordance with the Australian Standards 3996 requirements for Quality Assurance, AS3902 where applicable.

GENERAL

- Mascot's range of gastight covers are available to suit all load conditions. From pedestrian traffic, through to commercial passenger aircraft.
- Load ratings in accordance with AS3902 where applicable.
- All "clear opening" dimensions are quoted as the distance between the leading edges of opposing frame members.

STANDARD FEATURES

- All frames are designed to provide maximum resistance to deflection once installed.
- Mascot covers are manufactured with a special ribbed design to provide exceptional strength characteristics under all conditions.

- All covers are fitted with four keyholes designed to resist disengagement thereby yielding safer handling. To prevent the ingress of foreign matter, keyholes are provided with capping plugs.

MODIFICATIONS AVAILABLE

• BOLT DOWN & SECURITY SYSTEMS

For security purposes or to prevent uplift, covers can be fitted with hold-down bolts. Unless otherwise requested, bolts are high tensile steel with socket head, removable by use of an allen key. Security bolts can be supplied – i.e. for correctional centres.

• LOCKING COVERS

Single, trench and multi-part cover systems are all able to be fitted with a keyed deadlock.

This feature can be provided where the prevention of the removal of covers or unlawful pit access is of paramount importance. This is particularly useful for correctional institutions, or pits where internal access could be gained from outside the building.

• COUNTER-BALANCED COVERS

For the purpose of quick access, entry or exit, Mascot's covers can be counter-balanced thereby greatly reducing the instantaneous lifting effort required.

For further details, please contact your nearest Mascot Sales Office.

GASTIGHT ACCESS COVERS

MODIFICATIONS AVAILABLE (Continued)

• INSERTED INSPECTION COVERS

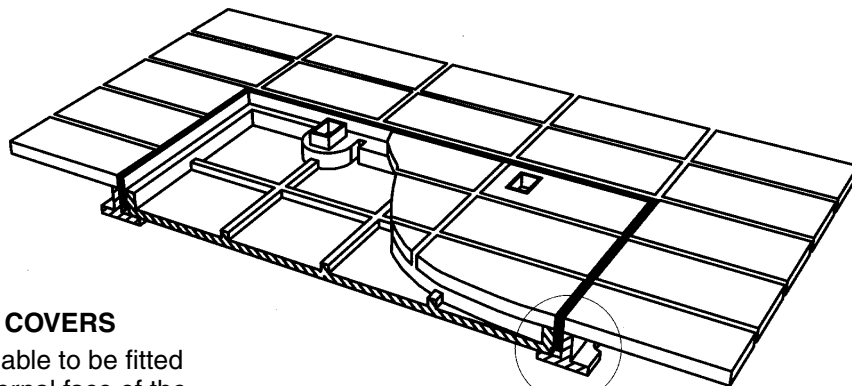
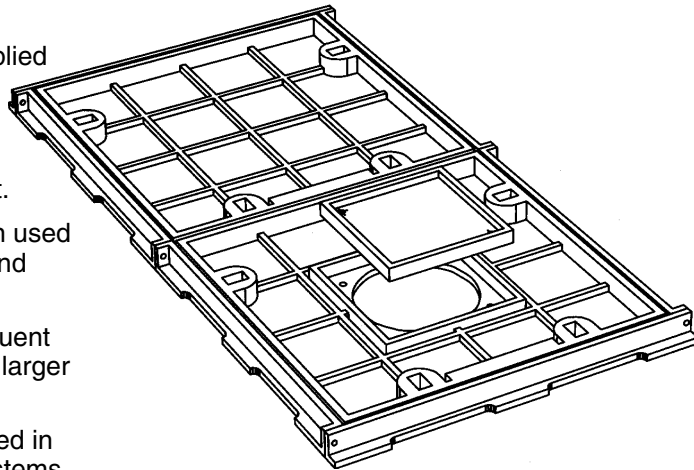
If required, Mascot covers can be supplied with an inspection cover inserted. As standard the inspection openings are available in 200 mm.

Other sizes are available upon request.

Insert inspection covers are most often used as access for fuel tank dip sticks or hand operated valves.

Also, any installation that requires frequent service without the need to lift a much larger cover.

Insert inspection covers can be provided in one, two, three and multipart cover systems.

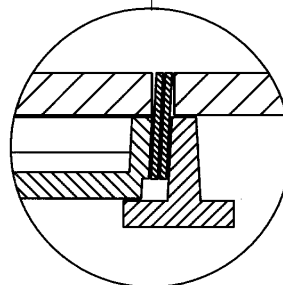


• DECORATIVE EDGED COVERS

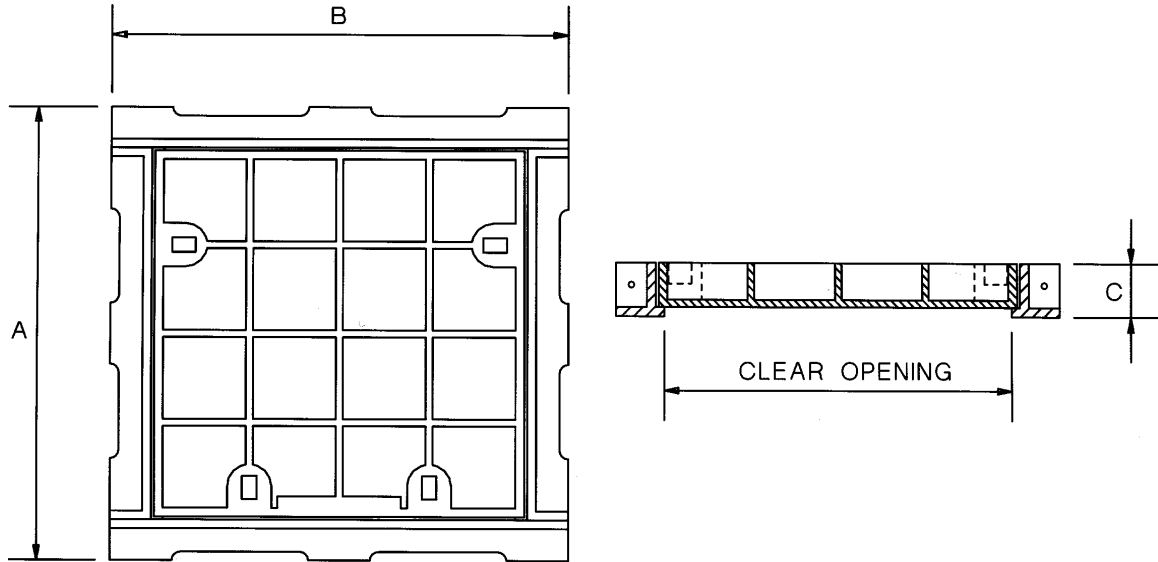
Mascot's covers are available to be fitted with alloy strips to the internal face of the frame and vertical seating edge of the cover. This allows the unit to be topped with your selected floor finish, i.e. ceramic tile, marble, carpet, etc.

Edge strips are available in brass, stainless steel and aluminium. Other materials are available upon request.

Typically, edge strip height makes provision for 18 mm of floor finish however, we are also able to set edge strip height to your specifications. In all cases, the keyhole is extended by the same height and a keyhole cover is provided in the same material as the edge strip.



SINGLE PART GASTIGHT ACCESS COVERS WITH TEE FRAMES



	Product Code	Clear Opening	Overall Dimensions		Depth of Frame
			A	B	
C L A S S B	MFB33	300 x 300	470	426	50
	MFB43	450 x 300	630	426	50
	MFB44	450 x 450	630	565	50
	MFB64	600 x 450	775	565	50
	MFB66	600 x 600	775	712	50
	MFB76	750 x 600	915	725	50
	MFB77	750 x 750	915	885	50
	MFB96	900 x 600	1075	725	50
	MFB99	900 x 900	1075	1022	50

	Product Code	Clear Opening	Overall Dimensions		Depth of Frame
			A	B	
C L A S S C	MFC33	300 x 300	470	470	75
	MFC44	450 x 450	620	620	75
	MFC64	600 x 450	770	620	75
	MFC66	600 x 600	770	770	75
	MFC76	750 x 600	920	770	75
	MFC77	750 x 750	920	920	75
	MFC96	900 x 600	1070	770	75
	MFC99	900 x 900	1070	1070	75

• FULL LOAD RATING DEFINITIONS APPEAR ON PAGE 29.

SINGLE PART GASTIGHT ACCESS COVERS WITH CELLULAR FRAMES

INSTALLATION TIPS

- If fitting the cover after the pit has been constructed, form a rebate to the entire perimeter of the pit wall.
Correct rebate sizes can be seen in the table below.
- Ensure that rebate faces are square and parallel.
- If packing is required to achieve the desired height, ensure that the intended material is suitable, i.e. metal shims or packers are ideal.

Note:

For the ease of operation, the cover may be removed from the frame after noting direction of removal and marking same.

- After packing frame to the desired height, check that diagonally opposing frame corners do not rock. If rocking is exhibited, adjust packing accordingly.

- Install internal formwork ensuring that formwork members do not foul the level seating of the cover.
- Replace the cover in the same direction as was originally removed, first checking that no dirt or grit are present on seating edges of frame or cover.
- Infill cover and rebate with minimum 25Mpa mix and trowel off.

REBATE DETAILS (mm)		
LOAD RATING	A	B
B	100	75
C	100	100
D	150	150
E – F – G	200	200

	Product Code	Clear Opening	Overall Dimensions		Depth of Frame
			A	B	C
C L A S S D	MFD33	300 x 300	546	x 535	100
	MFD44	450 x 450	686	x 686	100
	MFD64	600 x 450	835	x 686	100
	MFD66	600 x 600	835	x 840	100
	MFD76	750 x 600	985	x 840	100
	MFD77	750 x 750	985	x 985	100
	MFD96	900 x 600	1130	x 840	100
	MFD99	900 x 900	1130	x 1130	100

• FULL LOAD RATING DEFINITIONS APPEAR ON PAGE 29.

SINGLE PART GASTIGHT ACCESS COVERS WITH CELLULAR FRAMES

CLASS E	Product Code	Clear Opening	Overall Dimensions		Depth of Frame
			A	B	C
	MFE44	450 x 450	725	x 725	150
	MFE64	600 x 450	865	x 725	150
	MFE66	600 x 600	865	x 865	150
	MFE76	750 x 600	1016	x 865	150
	MFE77	750 x 750	1016	x 1016	150
	MFE96	900 x 600	1165	x 865	150
	MFE99	900 x 900	1165	x 1165	150

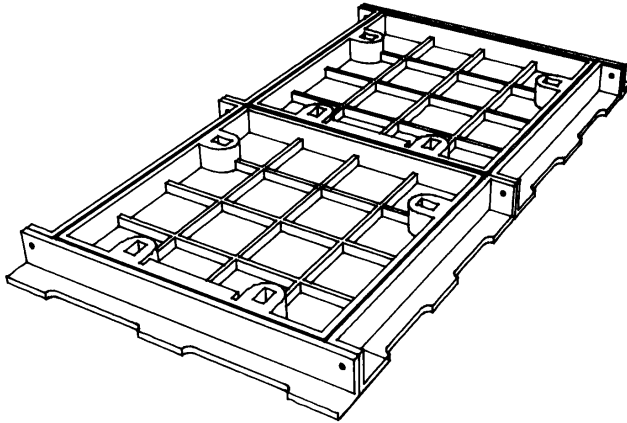
CLASS F	Product Code	Clear Opening	Overall Dimensions		Depth of Frame
			A	B	C
	MFF44	450 x 450	725	x 725	150
	MFF64	600 x 450	865	x 725	150
	MFF66	600 x 600	865	x 865	150
	MFF76	750 x 600	1016	x 865	150
	MFF77	750 x 750	1016	x 1016	150
	MFF96	900 x 600	1165	x 865	150
	MFF99	900 x 900	1165	x 1165	150

CLASS G	Product Code	Clear Opening	Overall Dimensions		Depth of Frame
			A	B	C
	MFG44	450 x 450	725	x 725	150
	MFG64	600 x 450	865	x 725	150
	MFG66	600 x 600	865	x 865	150
	MFG76	750 x 600	1016	x 865	150
	MFG77	750 x 750	1016	x 1016	150
	MFG96	900 x 600	1165	x 865	150
	MFG99	900 x 900	1165	x 1165	150

• FULL LOAD RATING DEFINITIONS APPEAR ON PAGE 29.



TWO AND THREE PART GASTIGHT ACCESS COVERS WITH TEE FRAMES



TWO PART COVERS

CLASS 'B' TEE FRAMES	
Product Code	Clear Opening Size mm
LCB100	300 x 660
LCB101	450 x 660
LCB102	450 x 960
LCB103	600 x 960
LCB104	600 x 1110
LCB105	600 x 1260
LCB106	750 x 1260
LCB107	750 x 1410
LCB108	750 x 1560
LCB109	900 x 1260
LCB110	900 x 1560
LCB111	900 x 1860
LCB112	1050 x 1260

CLASS 'C' TEE FRAMES	
Product Code	Clear Opening Size mm
MCC200	300 x 680
MCC201	450 x 680
MCC202	450 x 980
MCC203	600 x 990
MCC204	600 x 1130
MCC205	600 x 1280
MCC206	750 x 1280
MCC207	750 x 1430
MCC208	750 x 1580
MCC209	900 x 1280
MCC210	900 x 1580
MCC211	900 x 1880
MCC212	1050 x 1280

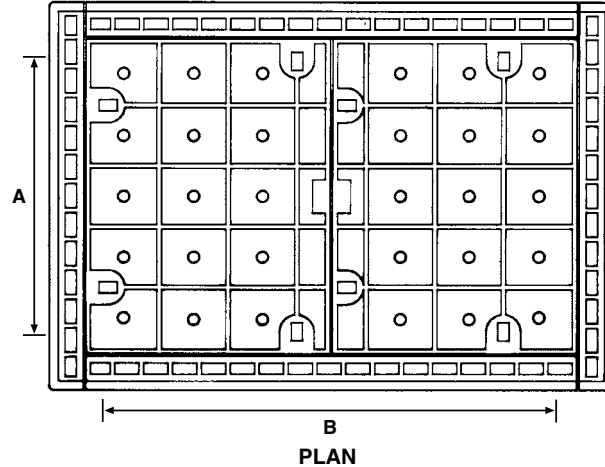
THREE PART COVERS

CLASS 'B' TEE FRAMES	
Product Code	Clear Opening Size mm
LCB113	300 x 1010
LCB114	450 x 1470
LCB115	600 x 1470
LCB116	600 x 1620
LCB117	600 x 1770
LCB118	600 x 1920
LCB119	750 x 1920
LCB120	750 x 2070
LCB121	750 x 2220
LCB122	750 x 2370
LCB123	900 x 1920
LCB124	900 x 2070
LCB125	900 x 2220
LCB126	900 x 2370
LCB127	900 x 2520
LCB128	900 x 2670
LCB129	900 x 2820

CLASS 'C' TEE FRAMES	
Product Code	Clear Opening Size mm
MCC213	300 x 1070
MCC214	450 x 1520
MCC215	600 x 1520
MCC216	600 x 1670
MCC217	600 x 1820
MCC218	600 x 1970
MCC219	750 x 1970
MCC220	750 x 2120
MCC221	750 x 2270
MCC222	750 x 2420
MCC223	900 x 1970
MCC224	900 x 2120
MCC225	900 x 2270
MCC226	900 x 2420
MCC227	900 x 2570
MCC228	900 x 2710
MCC229	900 x 2860

• FULL LOAD RATING DEFINITIONS APPEAR ON PAGE 29.

TWO AND THREE PART GASTIGHT COVERS WITH CELLULAR FRAMES



CLASS 'D' CELLULAR FRAMES			
Product Code	Clear Opening Size mm		
	A	x	B
HCD300	450	x	990
HCD301	600	x	990
HCD302	600	x	1140
HCD303	600	x	1290
HCD304	750	x	1290
HCD305	750	x	1440
HCD306	750	x	1590
HCD307	900	x	1290
HCD308	900	x	1590
HCD309	900	x	1890
HCD310	1050	x	1290

TWO PART

CLASS 'E' CELLULAR FRAMES			
Product Code	Clear Opening Size mm		
	A	x	B
HCE300	450	x	990
HCE301	600	x	990
HCE302	600	x	1140
HCE303	600	x	1290
HCE304	750	x	1290
HCE305	750	x	1440
HCE306	750	x	1590
HCE307	900	x	1290
HCE308	900	x	1590
HCE309	900	x	1890
HCE310	1050	x	1290

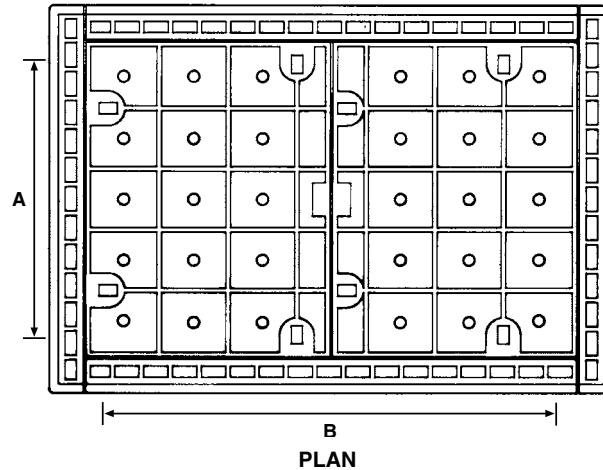
CLASS 'D' CELLULAR FRAMES			
Product Code	Clear Opening Size mm		
	A	x	B
HCD311	450	x	1520
HCD312	600	x	1520
HCD313	600	x	1670
HCD314	600	x	1820
HCD315	600	x	1970
HCD316	750	x	1970
HCD317	750	x	2120
HCD318	750	x	2270
HCD319	750	x	2420
HCD320	900	x	1970
HCD321	900	x	2120
HCD322	900	x	2270
HCD323	900	x	2420
HCD324	900	x	2570
HCD325	900	x	2710
HCD326	900	x	2860

THREE PART

CLASS 'E' CELLULAR FRAMES			
Product Code	Clear Opening Size mm		
	A	x	B
HCE311	450	x	1520
HCE312	600	x	1520
HCE313	600	x	1670
HCE314	600	x	1820
HCE315	600	x	1970
HCE316	750	x	1970
HCE317	750	x	2120
HCE318	750	x	2270
HCE319	750	x	2420
HCE320	900	x	1970
HCE321	900	x	2120
HCE322	900	x	2270
HCE323	900	x	2420
HCE324	900	x	2570
HCE325	900	x	2710
HCE326	900	x	2860

• FULL LOAD RATING DEFINITIONS APPEAR ON PAGE 29.

TWO AND THREE PART GASTIGHT COVERS WITH CELLULAR FRAMES



CLASS 'F' CELLULAR FRAMES			
Product Code	Clear Opening Size mm		
	A		B
HCF300	450	x	990
HCF301	600	x	990
HCF302	600	x	1140
HCF303	600	x	1290
HCF304	750	x	1290
HCF305	750	x	1440
HCF306	750	x	1590
HCF307	900	x	1290
HCF308	900	x	1590
HCF309	900	x	1890
HCF310	1050	x	1290

TWO PART

CLASS 'G' CELLULAR FRAMES			
Product Code	Clear Opening Size mm		
	A		B
HCG300	450	x	990
HCG301	600	x	990
HCG302	600	x	1140
HCG303	600	x	1290
HCG304	750	x	1290
HCG305	750	x	1440
HCG306	750	x	1590
HCG307	900	x	1290
HCG308	900	x	1590
HCG309	900	x	1890
HCG310	1050	x	1290

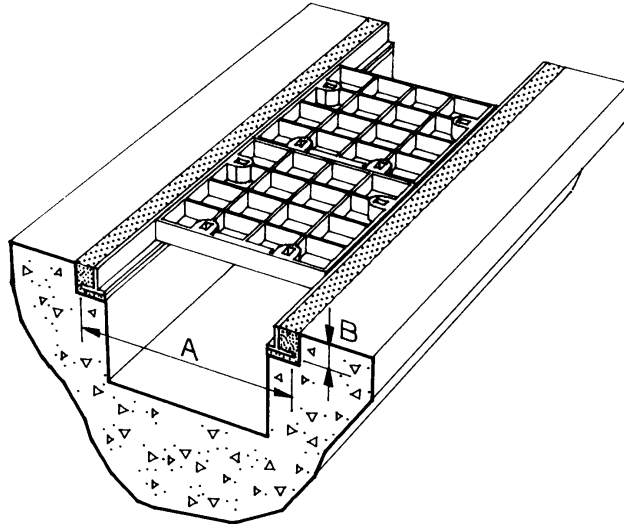
CLASS 'F' CELLULAR FRAMES			
Product Code	Clear Opening Size mm		
	A		B
HCF311	450	x	1520
HCF312	600	x	1520
HCF313	600	x	1670
HCF314	600	x	1820
HCF315	600	x	1970
HCF316	750	x	1970
HCF317	750	x	2120
HCF318	750	x	2270
HCF319	750	x	2420
HCF320	900	x	1970
HCF321	900	x	2120
HCF322	900	x	2270
HCF323	900	x	2420
HCF324	900	x	2570
HCF325	900	x	2710
HCF326	900	x	2860

THREE PART

CLASS 'G' CELLULAR FRAMES			
Product Code	Clear Opening Size mm		
	A		B
HCG311	450	x	1520
HCG312	600	x	1520
HCG313	600	x	1670
HCG314	600	x	1820
HCG315	600	x	1970
HCG316	750	x	1970
HCG317	750	x	2120
HCG318	750	x	2270
HCG319	750	x	2420
HCG320	900	x	1970
HCG321	900	x	2120
HCG322	900	x	2270
HCG323	900	x	2420
HCG324	900	x	2570
HCG325	900	x	2710
HCG326	900	x	2860

• FULL LOAD RATING DEFINITIONS APPEAR ON PAGE 29.

GASTIGHT CAST IRON TRENCH COVERS



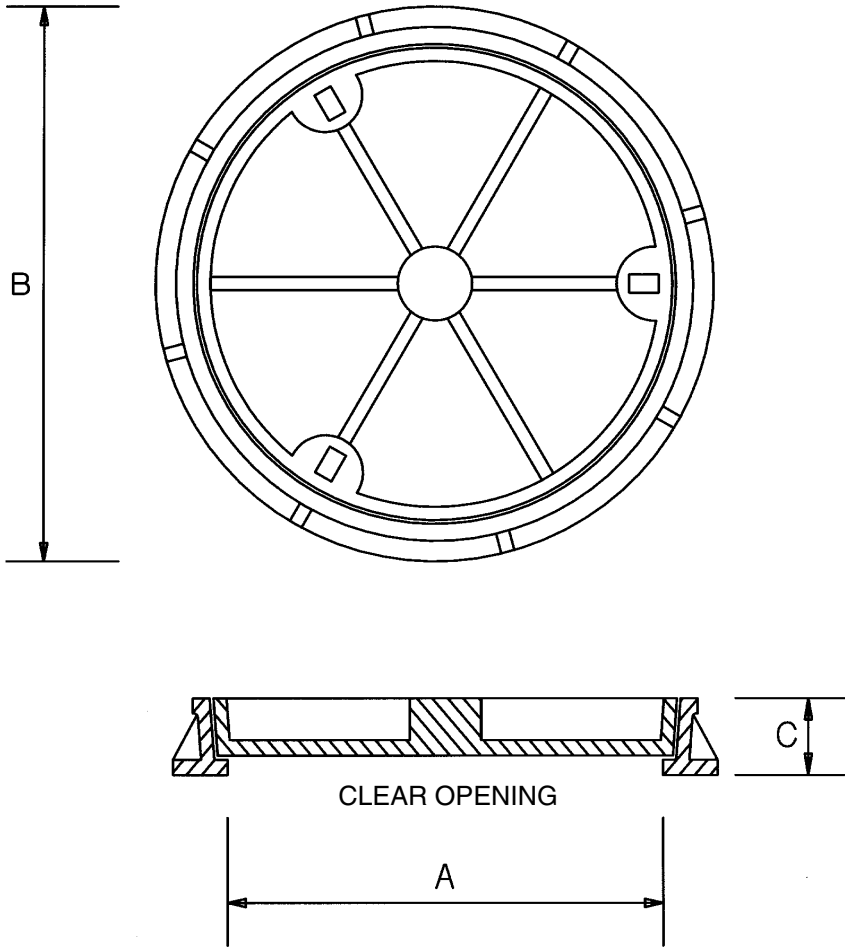
	PRODUCT CODE	OPENING SIZE (mm)	A (mm)	B (mm)
CLASS B	LB201	300	470	50
	LB202	450	630	50
	LB203	600	775	50
	LB204	750	915	50
	LB205	900	1075	50
CLASS C	MC401	300	470	75
	MC402	450	620	75
	MC403	600	770	75
	MC404	750	920	75
	MC405	900	1070	75
CLASS D	HD501	300	546	100
	HD502	450	686	100
	HD503	600	840	100
	HD504	750	985	100
	HD505	900	1130	100
	HD506	1050	1280	100
CLASS E	HE702	450	725	150
	HE703	600	865	150
	HE704	750	1016	150
CLASS F	HF802	450	725	150
	HF803	600	865	150
	HF804	750	1016	150
CLASS G	HG902	450	725	150
	HG903	600	865	150
	HG904	750	1016	150

NOTE: Angled, circular, splayed or intersecting trench runs can be provided to suit almost all load requirements.

Our technical staff can assist you during the planning and construction stages with helpful advice on how to prepare the area for the best, most accurate effect.

• FULL LOAD RATING DEFINITIONS APPEAR ON PAGE 29.

ROUND ACCESS FRAMES AND COVERS FOR CONCRETE FILLING

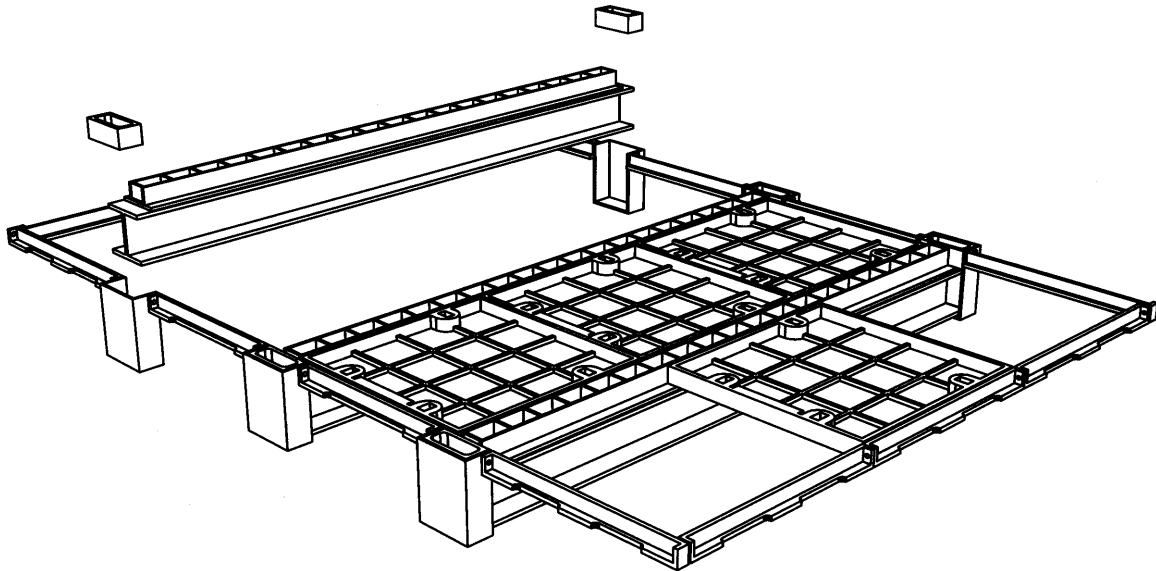


PRODUCT CODE	CLEAR OPENING A	LOAD RATING	DIMENSIONS	
			B	C
24:CC:L	600 mm Diam.	B	700 mm Diam. x	50 mm
24:CC:C	600 mm Diam.	D	750 mm Diam. x	90 mm
24:CC:EH	600 mm Diam.	E – F – G	850 mm Diam. x	120 mm

NOTE: ITEMS SUPPLIED MAY DIFFER FROM THE ABOVE DIMENSIONS DUE TO CONTINUAL PRODUCT IMPROVEMENTS

• FULL LOAD RATING DEFINITIONS APPEAR ON PAGE 29.

MULTIPART GASTIGHT ACCESS COVERS



GENERAL

For use where the clear opening exceeds 900mm in both directions.

All product manufacturing specifications are as per those appearing on page 1.

Mascot has developed a range of about 5,000 different multipart covers to cater for a variety of size and load requirements.

Mascot multipart covers have been designed as a total system to maximise in-service performance, no matter what your needs. Systems are available for pedestrian, car, truck, crane and commercial aircraft loads.

Your nearest Mascot sales office can assist with your selection of system to best suit your application.

STANDARD FEATURES

Depending upon your final choice, the appropriate covers are selected, manufactured and machined to give their orientation.

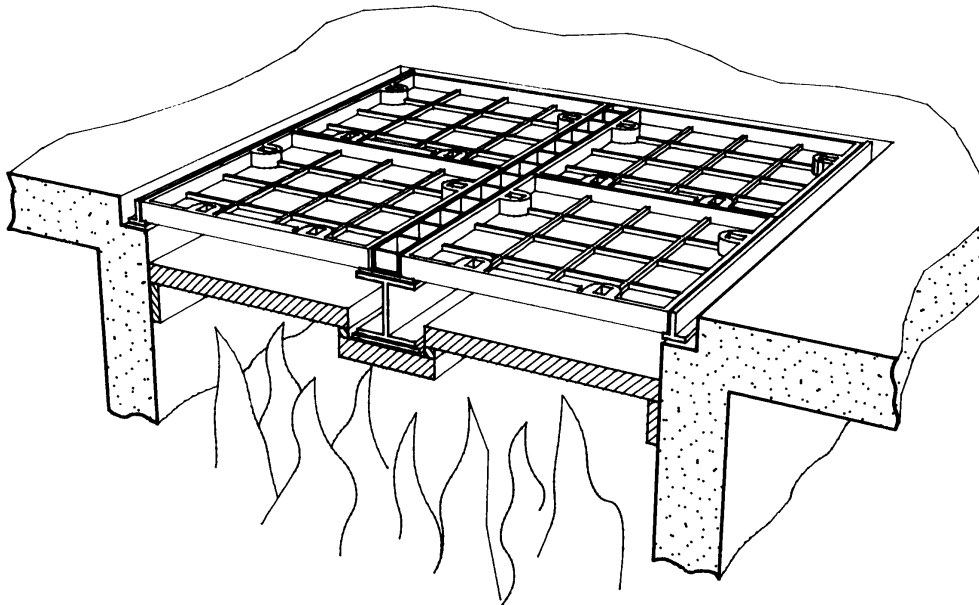
The system relies on a certain number of "rows" of covers, divided by removable beams to achieve the final opening.

The beam size will depend upon the final load to be sustained as well as the beam's length.

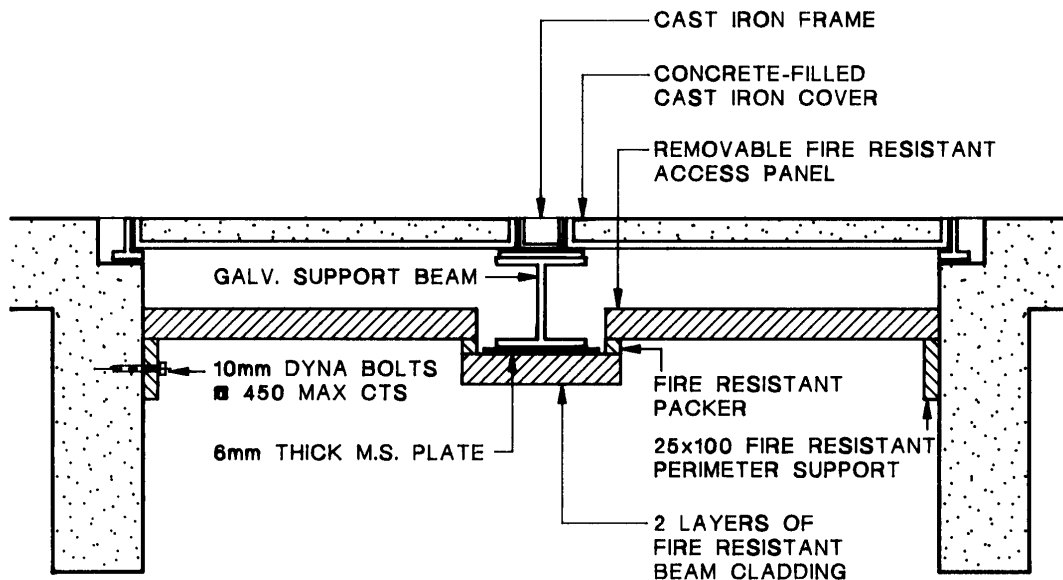
In all cases, unless otherwise requested, beams are supplied cut to the correct length and then hot dip galvanised at no extra charge.



FIRE RESISTANT PANELS FOR MULTIPART ACCESS HATCHES



TESTED TO FOUR HOURS ENDURANCE



GENERAL

- The system, as detailed, has been tested at the C.S.I.R.O. laboratories to 4 hours duration.
- Designed in collaboration with our consultant fire protection engineers.
- Suitable for B, C, D, E, F and G Classes.

FEATURES

- Tested in accordance with AS1530.4-1990.
- Can be retrospectively fitted if required.
- Does not require special modifications to slab configuration (other than standard multipart requirements).
- Only restricts clear span by 50mm in both directions.



MULTIPART GASTIGHT ACCESS COVERS

MADE TO ORDER

Once covers, frames and beams have been manufactured, assembly can then take place. Only experienced staff are selected for this task as the process directly affects the final fit of the components to ensure gas and water tightness.

After the system has been assembled, it is checked for accuracy of fit, adjusted if necessary and then pulled down and coated with a bituminous paint. The components are then marked for your convenience to assist with the product's re-assembly on site.

The final process is to carefully pack your components to aid the transportation of goods to site.

NOTE: A great many number of Mascot's multipart cover systems can be supplied to your site already assembled as standard.

This service will depend upon the overall size of the system, it's weight and it's destination.

If a system is chosen to arrive on site as componentry it's re-assembly should be a relatively simple matter assuming that the rebated pit/slab opening has been constructed accurately.

If in doubt, a Mascot Representative can provide on-site guidance as required.

AVAILABLE EXTRAS

Key locks, hold-down bolts, inspection covers, edge strips, counter balancing etc. are all available for Mascot's multipart systems.

For more details please see pages 1 & 2.

REBATE DETAILS

As discussed previously, multipart covers are best described as rows of trench covers separated by beams. The beam's role is to act as the supporting members' as if the internal walls were removed which were previously divided into two trenches. Hence the beams allow larger internal spans to be achieved, by also being able to be removed during normal service.

As such, the floor slab or pit top will need to be rebated to suit:

- a) the perimeter frame members for height and seating edge, as well as
- b) the height, width, depth and, of course number of beam support pockets.

EXAMPLE

Let us assume that you require an opening of approx. 2000 x 2000mm in a floor slab which will only ever sustain pedestrian or light car traffic. After consulting page 15 you can see that the closest standard Class B system is product code B1113 with an internal clear opening of 2060 x 2040mm.

Next we can determine from page 20 that product B1113 has two beams with a beam spacing of 660, 720 and 660. When these are added up we can see that the clear opening perpendicular to the beam length is the 2040mm dimension. As such the two beams span the 2060mm distance.

MULTIPART GASTIGHT ACCESS COVERS

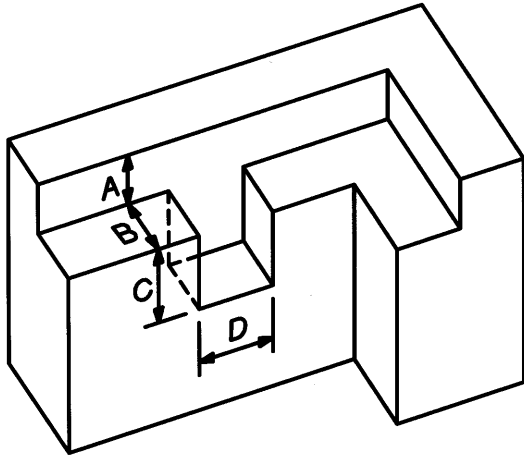


Figure 1

The above table and illustration shows that the height (A) and seating depth (B) for a Class B cover is 75 x 100mm likewise the width and height of the beam pocket rebate is 150mm (D) x 100mm (C).

As such our completed slab rebate is shown below in Figure 2.

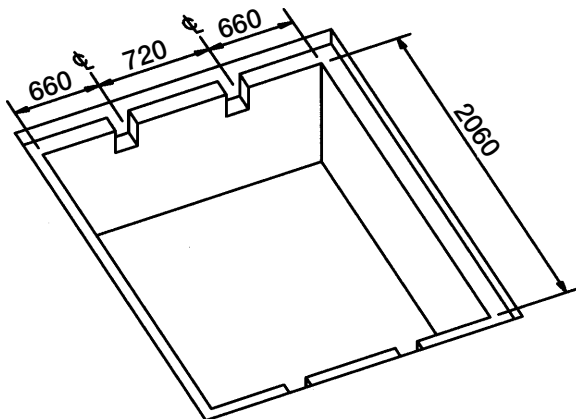


Figure 2

REBATE DETAILS MM

CLASS	A	B	C	D
B	75	100	100	150
C	100	100	150	225
D	150	150	150	225
E – F – G	200	200	300	250

When planning rebates, our technical staff can provide sketch layouts where needed. Shop drawings at A1 size format can also be made available at an additional charge.

FIRE PROTECTION SYSTEMS FOR ACCESS HATCHES

Mascot's multipart systems are able to be optioned with a fire protection system designed by our Consultant Engineers

Our unique design uses an array of fire rated board, cut and applied to provide a safe and secure system.

The application of Mascot's Fire System is also available as a retrospectively fitted option in some cases. It is however, strongly advised that you contact our technical staff as the 'clear opening' dimensions quoted in our product selection tables will need to change, in most cases.

Additional drawings and literature supporting the fitment and performance of Mascot's Fire System are available upon request during the design phase of your project. Contact Mascot's Sales Office for details and advice.



FRAMES & MULTIPLE COVERS — CLASS B

	1105mm	1255mm	1405mm	1555mm	1705mm	1855mm	1910mm
1020mm	B1001	B1002					B1007
1170mm	B1016	B1017					B1022
1320mm	B1031	B1032	B1033	B1034	B1035	B1036	B1037
1470mm		B1047	B1048	B1049			B1052
1620mm		B1062	B1063	B1064		B1066	B1067
1740mm	B1076	B1077	B1078				B1082
1890mm	B1091	B1092	B1093			B1098	B1097
2040mm	B1106	B1107	B1108	B1109	B1110	B1111	B1112
2190mm		B1122	B1123	B1124			B1127
2340mm		B1137	B1138	B1139			B1142
2490mm		B1152	B1153	B1154			B1157
2640mm		B1167					B1172
2760mm	B1181	B1182	B1183	B1184	B1185	B1186	
2910mm		B1197					B1202
3060mm		B1212	B1213	B1214	B1215		B1216
3210mm		B1227	B1228	B1229	B1230	B1231	B1232
3360mm		B1242	B1243	B1244	B1245	B1246	B1247
3480mm	B1256	B1257	B1258	B1259	B1260	B1261	B1262
3630mm		B1272	B1273	B1274		B1276	B1277
3780mm			B1288	B1289	B1290	B1291	
3930mm		B1302	B1303	B1304	B1305	B1306	B1307
4080mm		B1317	B1318	B1319		B1321	B1322
4230mm		B1332	B1333	B1334		B1336	B1337
4380mm		B1347	B1348		B1350		B1352
4500mm		B1362	B1363	B1364			B1367
4650mm		B1377	B1378	B1379		B1381	B1382
4800mm		B1392	B1393	B1394		B1396	B1397
4950mm		B1407	B1408	B1409			B1412
5100mm	B1421	B1422	B1423	B1424	B1425	B1426	B1427

	2060mm	2210mm	2360mm	2565mm	2715mm	2865mm	3015mm	3165mm
1020mm	B1008			B1011				
1170mm	B1023			B1026				
1320mm	B1038	B1039	B1040	B1041	B1042	B1043	B1044	B1045
1470mm	B1053	B1054	B1055	B1056	B1057	B1058	B1059	B1060
1620mm	B1068	B1069	B1070	B1071	B1072	B1073	B1074	B1075
1740mm				B1086				
1890mm			B1100	B1101				
2040mm	B1113	B1114	B1115	B1116	B1117	B1118	B1119	B1120
2190mm	B1128	B1129	B1130	B1131	B1132	B1133	B1134	B1135
2340mm	B1143	B1144	B1145	B1146	B1147	B1148	B1149	B1150
2490mm	B1158	B1159	B1160	B1161	B1162	B1163	B1164	B1165
2640mm				B1176				
2760mm	B1188	B1189	B1190	B1191	B1192	B1193	B1194	B1195
2910mm	B1203	B1204	B1205	B1206	B1207	B1208	B1209	B1210
3060mm	B1218	B1219	B1220	B1221	B1222	B1223	B1224	B1225
3210mm	B1233	B1234	B1235	B1236	B1237	B1238	B1239	B1240
3360mm	B1248	B1249	B1250	B1251	B1252	B1253	B1254	B1255
3480mm	B1263	B1264	B1265	B1266	B1267	B1268	B1269	B1270
3630mm	B1278	B1279	B1280	B1281	B1282	B1283	B1284	B1285
3780mm	B1293	B1294	B1295	B1296	B1297	B1298	B1299	B1300
3930mm	B1308	B1309	B1310	B1311	B1312	B1313	B1314	B1315
4080mm	B1323	B1324	B1325	B1326	B1327	B1328	B1329	B1330
4230mm	B1338	B1339	B1340	B1341	B1342	B1343	B1344	B1345
4380mm	B1353	B1354	B1355	B1356	B1357	B1358	B1359	B1360
4500mm	B1368	B1369	B1370	B1371	B1372	B1373	B1374	B1375
4650mm	B1383	B1384	B1385	B1386	B1387	B1388	B1389	B1390
4800mm	B1398	B1399	B1400	B1401	B1402	B1403	B1404	B1405
4950mm	B1413	B1414	B1415	B1416	B1417	B1418	B1419	B1420
5100mm	B1428	B1429	B1430	B1431	B1432	B1433	B1434	B1435

• FULL LOAD RATING DEFINITIONS APPEAR ON PAGE 29.



FRAMES & MULTIPLE COVERS — CLASS C

	1110mm	1260mm	1410mm	1560mm	1860mm	1920mm	2070mm
1060mm	C3000	C3001				C3005	
1210mm	C3014	C3015				C3019	
1360mm	C3028	C3029	C3030	C3031	C3032	C3033	C3034
1510mm		C3043	C3044	C3045		C3047	C3048
1660mm		C3057	C3058	C3059		C3061	C3062
1820mm	C3070	C3071				C3075	
1970mm		C3085				C3089	
2120mm	C3098	C3099	C3100	C3101	C3102	C3103	C3104
2270mm		C3113	C3114	C3115		C3117	C3118
2420mm		C3127	C3128	C3129		C3131	C3132
2570mm		C3141	C3142	C3143		C3145	C3146
2720mm		C3155	C3156		C3158	C3159	C3160
2880mm	C3168	C3169	C3170	C3171	C3172	C3173	C3174
3030mm		C3183	C3184	C3185		C3187	C3188
3180mm		C3197	C3198	C3199		C3201	C3202
3330mm		C3211	C3212	C3213		C3215	C3216
3480mm		C3225	C3226	C3227		C3229	C3230
3640mm	C3252	C3239	C3240	C3241		C3243	C3244
3790mm		C3253	C3254	C3255	C3256	C3257	C3258
3940mm		C3267	C3268	C3269	C3270	C3271	C3272
4090mm		C3281	C3282	C3283	C3284	C3285	C3286
4240mm		C3295	C3296	C3297	C3298	C3299	C3300
4390mm		C3309	C3310	C3311	C3312	C3313	C3314
4550mm		C3323	C3324	C3325	C3326	C3327	C3328
4700mm		C3337	C3338	C3339	C3340	C3341	C3342
4850mm		C3351	C3352	C3353	C3354	C3355	C3356
5000mm		C3365	C3366	C3367	C3368	C3369	C3370
5150mm		C3379	C3380	C3381	C3382	C3383	C3384
5300mm		C3393	C3394	C3395	C3396	C3397	C3398
	2220mm	2370mm	2580mm	2730mm	2880mm	3030mm	3180mm
1060mm			C3009				
1210mm			C3023				
1360mm	C3035	C3036	C3037	C3038	C3039	C3040	C3041
1510mm	C3049	C3050	C3051	C3052	C3053	C3054	C3055
1660mm	C3063	C3064	C3065	C3066	C3067	C3068	C3069
1820mm			C3079				
1970mm			C3093				
2120mm	C3105	C3106	C3107	C3108	C3109	C3110	C3111
2270mm	C3119	C3120	C3121	C3122	C3123	C3124	C3125
2420mm	C3133	C3134	C3135	C3136	C3137	C3138	C3139
2570mm	C3147	C3148	C3149	C3150	C3151	C3152	C3153
2720mm	C3161	C3162	C3163	C3164	C3165	C3166	C3167
2880mm	C3175	C3176	C3177	C3178	C3179	C3180	C3181
3030mm	C3189	C3190	C3191	C3192	C3193	C3194	C3195
3180mm	C3203	C3204	C3205	C3206	C3207	C3208	C3209
3330mm	C3217	C3218	C3219	C3220	C3221	C3222	C3223
3480mm	C3231	C3232	C3233	C3234	C3235	C3236	C3237
3640mm	C3245	C3246	C3247	C3248	C3249	C3250	C3251
3790mm	C3259	C3260	C3261	C3262	C3263	C3264	C3265
3940mm	C3273	C3274	C3275	C3276	C3277	C3278	C3279
4090mm	C3287	C3288	C3289	C3290	C3291	C3292	C3293
4240mm	C3301	C3302	C3303	C3304	C3305	C3306	C3307
4390mm	C3315	C3316	C3317	C3318	C3319	C3320	C3321
4550mm	C3329	C3330	C3331	C3332	C3333	C3334	C3335
4700mm	C3343	C3344	C3345	C3346	C3347	C3348	C3349
4850mm	C3357	C3358	C3359	C3360	C3361	C3362	C3363
5000mm	C3371	C3372	C3373	C3374	C3375	C3376	C3377
5150mm	C3385	C3386	C3387	C3388	C3389	C3390	C3391
5300mm	C3399	C3400	C3401	C3402	C3403	C3404	C3405

• FULL LOAD RATING DEFINITIONS APPEAR ON PAGE 29.



FRAMES & MULTIPLE COVERS — CLASS D

	1130mm	1280mm	1430mm	1510mm	1580mm	1660mm	1810mm	1960mm
1060mm	D5000	D5001		D5003		D5005	D5006	D5007
1210mm	D5017	D5018		D5020		D5022	D5023	D5024
1360mm	D5034	D5035	D5036	D5037	D5038	D5039	D5040	D5041
1510mm		D5052			D5055			D5058
1660mm		D5069	D5070		D5072			D5075
1810mm		D5086						D5092
1960mm		D5103						D5109
2120mm	D5119	D5120	D5121	D5122	D5123	D5124	D5125	D5126
2270mm		D5137	D5138		D5140			D5143
2420mm		D5154	D5155		D5157			D5160
2570mm		D5171	D5172					D5177
2720mm		D5188						D5194
2880mm	D5204	D5205	D5206	D5207	D5208	D5209	D5210	D5211
3030mm		D5222	D5223		D5225			D5228
3180mm		D5239	D5240		D5242			D5245
3330mm		D5256	D5257		D5259			D5262
3480mm		D5273	D5274		D5276			D5279
3640mm	D5289	D5290	D5291	D5292	D5293	D5294	D5295	D5296
3790mm		D5307	D5308		D5310			D5313
3940mm		D5324	D5325		D5327			D5330
4090mm		D5341	D5342		D5344			D5347
4240mm		D5358	D5359		D5361			D5364
4390mm		D5375	D5376		D5378			D5381
4400mm	D5391	D5392	D5393	D5394	D5395	D5396	D5397	D5398
4550mm		D5409	D5410		D5412			D5415
4700mm		D5426	D5427		D5429			D5432
4850mm		D5443	D5444		D5446			D5449
5000mm		D5460	D5461		D5463			D5466
5150mm		D5477	D5478		D5480			D5483
5300mm		D5494	D5495		D5497			D5500

	2110mm	2260mm	2410mm	2640mm	2790mm	2940mm	3090mm	3240mm	3320mm
1060mm									
1210mm									
1360mm	D5042	D5043	D5044	D5045	D5046	D5047	D5048	D5049	D5050
1510mm	D5059	D5060	D5061	D5062	D5063	D5064	D5065	D5066	D5067
1660mm	D5076	D5077	D5078	D5079	D5080	D5081	D5082	D5083	D5084
1810mm				D5096					D5101
1960mm				D5113					D5118
2120mm	D5127	D5128	D5129	D5130	D5131	D5132	D5133	D5134	D5135
2270mm	D5144	D5145	D5146	D5147	D5148	D5149	D5150	D5151	D5152
2420mm	D5161	D5162	D5163	D5164	D5165	D5166	D5167	D5168	D5169
2570mm	D5178	D5179	D5180	D5181	D5182	D5183	D5184	D5185	D5186
2720mm				D5198					D5203
2880mm	D5212	D5213	D5214	D5215	D5216	D5217	D5218	D5219	D5220
3030mm	D5229	D5230	D5231	D5232	D5233	D5234	D5235	D5236	D5237
3180mm	D5246	D5247	D5248	D5249	D5250	D5251	D5252	D5253	D5254
3330mm	D5263	D5264	D5265	D5266	D5267	D5268	D5269	D5270	D5271
3480mm	D5280	D5281	D5282	D5283	D5284	D5285	D5286	D5287	D5288
3640mm	D5297	D5298	D5299	D5300	D5301	D5302	D5303	D5304	D5305
3790mm	D5314	D5315	D5316	D5317	D5318	D5319	D5320	D5321	D5322
3940mm	D5331	D5332	D5333	D5334	D5335	D5336	D5337	D5338	D5339
4090mm	D5348	D5349	D5350	D5351	D5352	D5353	D5354	D5355	D5356
4240mm	D5365	D5366	D5367	D5368	D5369	D5370	D5371	D5372	D5373
4390mm	D5382	D5383	D5384	D5385	D5386	D5387	D5388	D5389	D5390
4400mm	D5399	D5400	D5401	D5402	D5403	D5404	D5405	D5406	D5407
4550mm	D5416	D5417	D5418	D5419	D5420	D5421	D5422	D5423	D5424
4700mm	D5433	D5434	D5435	D5436	D5437	D5438	D5439	D5440	D5441
4850mm	D5450	D5451	D5452	D5453	D5454	D5455	D5456	D5457	D5458
5000mm	D5467	D5468	D5469	D5470	D5471	D5472	D5473	D5474	D5475
5150mm	D5484	D5485	D5486	D5487	D5488	D5489	D5490	D5491	D5492
5300mm	D5501	D5502	D5503	D5504	D5505	D5506	D5507	D5508	D5509

• FULL LOAD RATING DEFINITIONS APPEAR ON PAGE 29.

FRAMES & MULTIPLE COVERS — CLASS E, F & G

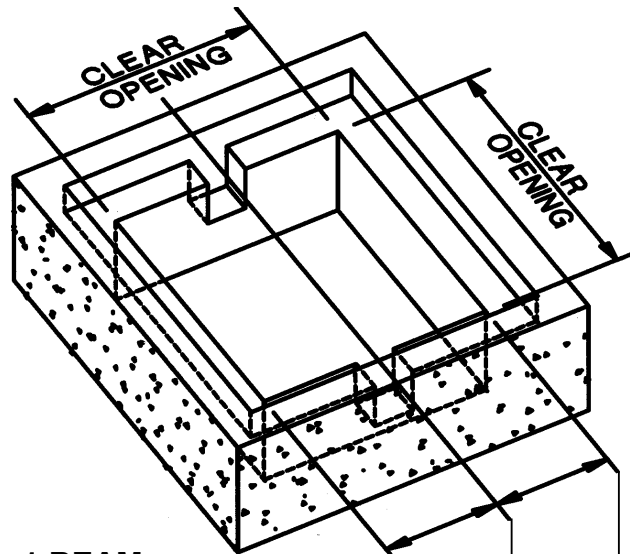
	1000mm	1150mm	1300mm	1550mm	1700mm
1080mm	E8001	E8002	E8003	E8004	E8006
1230mm	E8014	E8015	E8016	E8017	E8019
1380mm	E8027	E8028	E8029	E8030	E8032
1530mm			E8042		
1680mm			E8055		
1710mm	E8066	E8067	E8068		E8071
1860mm	E8079	E8080	E8081	E8082	E8084
2010mm	E8092	E8093	E8094	E8095	E8097
2160mm	E8105	E8106	E8107	E8108	E8110
2310mm					
2340mm	E8131	E8132	E8133	E8134	E8136
2490mm			E8146		
2640mm	E8157	E8158	E8159	E8160	E8162
2790mm			E8172		
2940mm	E8183	E8184	E8185	E8186	E8188
2970mm	E8196	E8197	E8198	E8199	E8201
3120mm	E8209	E8210	E8211	E8212	E8214
3270mm					
3420mm	E8235	E8236	E8237	E8238	E8240
3600mm			E8250		
3750mm	E8261	E8262	E8263	E8264	E8266
3900mm			E8276		
4050mm	E8287	E8288	E8289		E8292
4200mm	E8300	E8301	E8302	E8303	E8305

	1850mm	2000mm	2100mm	2250mm	2400mm	2550mm	2700mm
1080mm	E8007	E8008	E8009	E8010	E8011	E8012	E8013
1230mm	E8020	E8021	E8022	E8023	E8024	E8025	E8026
1380mm	E8033	E8034	E8035	E8036	E8037	E8038	E8039
1530mm							
1680mm							
1710mm	E8072	E8073	E8074	E8075	E8076	E8077	E8078
1860mm	E8085	E8086	E8087	E8088	E8089	E8090	E8091
2010mm	E8098	E8099	E8100	E8101	E8102	E8103	E8104
2160mm	E8111	E8112	E8113	E8114	E8115	E8116	E8117
2310mm							
2340mm	E8137	E8138	E8139	E8140	E8141	E8142	E8143
2490mm							
2640mm	E8163	E8164	E8165	E8166	E8167	E8168	E8169
2790mm							
2940mm	E8189	E8190	E8191	E8192	E8193	E8194	E8195
2970mm	E8202	E8203	E8204	E8205	E8206	E8207	E8208
3120mm	E8215	E8216	E8217	E8218	E8219	E8220	E8221
3270mm							
3420mm	E8241	E8242	E8243	E8244	E8245	E8246	E8247
3600mm							
3750mm	E8267	E8268	E8269	E8270	E8271	E8272	E8273
3900mm							
4050mm	E8293	E8294	E8295	E8296	E8297	E8298	E8299
4200mm	E8306	E8307	E8308	E8309	E8310	E8311	E8312

PLEASE NOTE: When specifying or ordering, if F or G loads are required, please substitute in place of E (ie: E8001, if G load is required, please write code as G8001)

• FULL LOAD RATING DEFINITIONS APPEAR ON PAGE 29.

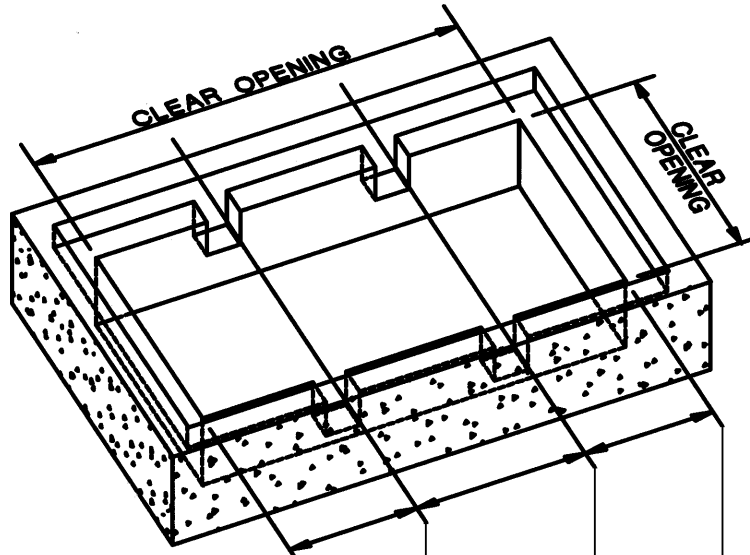
REBATE DETAILS FOR MULTIPLE COVERS BEAM CENTRES FROM CLEAR OPENING



1 BEAM	B1001 to B1015	510	510
CLASS B	B1016 to B1030	660	510
	B1031 to B1045	660	660
	B1046 to B1060	810	660
	B1061 to B1075	810	810
	CLASS C	C3000 to C3013	530
	C3014 to C3027	530	680
	C3028 to C3041	680	680
	C3042 to C3055	680	830
	C3056 to C3069	830	830
CLASS D	D5000 to D5016	530	530
	D5017 to D5033	530	680
	D5034 to D5050	680	680
	D5051 to D5067	680	830
	D5068 to D5084	830	830
	D5085 to D5101	830	980
	D5102 to D5118	980	980
CLASS E, F & G	E8001 to E8013	540	540
	E8014 to E8026	540	690
	E8027 to E8039	690	690
	E8040 to E8052	690	840
	E8053 to E8069	840	840

FOR CLASS F & G LOAD RATINGS, SUBSTITUTE "F OR G" IN CODE.
IE: E8001 BECOMES F8001 OR G8001

REBATE DETAILS FOR MULTIPLE COVERS BEAM CENTRES FROM CLEAR OPENING



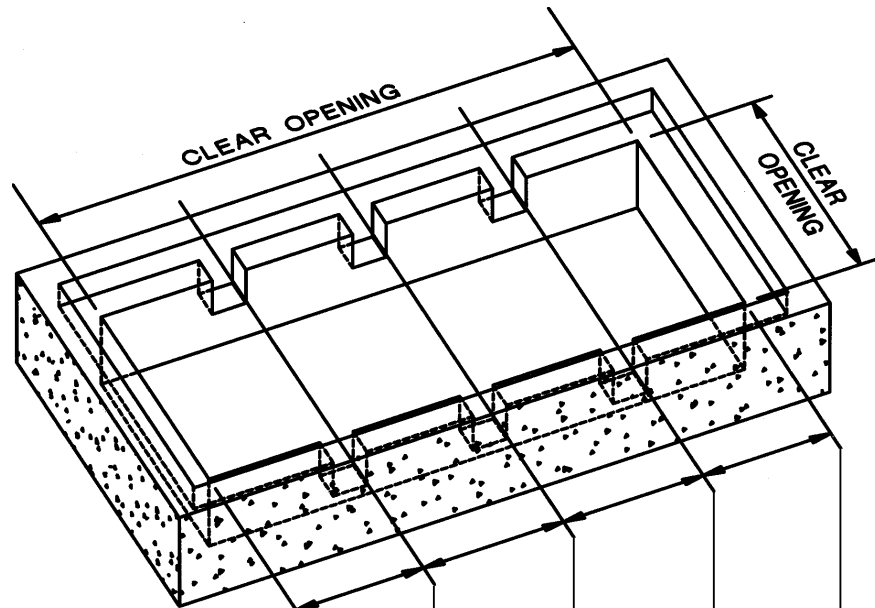
2 BEAMS

	B1076 to B1090	510	720	510
	B1091 to B1105	660	570	660
CLASS B	B1106 to B1120	660	720	660
	B1121 to B1135	660	870	660
	B1136 to B1150	810	720	810
	B1151 to B1165	810	870	810
	B1166 to B1180	810	1020	810
		C3070 to C3083	530	760
CLASS C	C3084 to C3097	680	610	680
	C3098 to C3111	680	760	680
	C3112 to C3125	680	910	680
	C3126 to C3139	830	760	830
	C3140 to C3153	830	910	830
	C3154 to C3167	830	1060	830
		D5119 to D5135	680	760
CLASS D	D5136 to D5152	680	910	680
	D5153 to D5169	830	760	830
	D5170 to D5186	830	910	830
	D5187 to D5203	830	1060	830
		E8066 to E8078	540	630
CLASS E, F & G	E8079 to E8091	540	780	540
	E8092 to E8104	690	630	690
	E8105 to E8117	690	780	690
	E8118 to E8130	690	930	690

FOR CLASS F & G LOAD RATINGS, SUBSTITUTE "F OR G" IN CODE.

IE: E8001 BECOMES F8001 OR G8001

REBATE DETAILS FOR MULTIPLE COVERS BEAM CENTRES FROM CLEAR OPENING



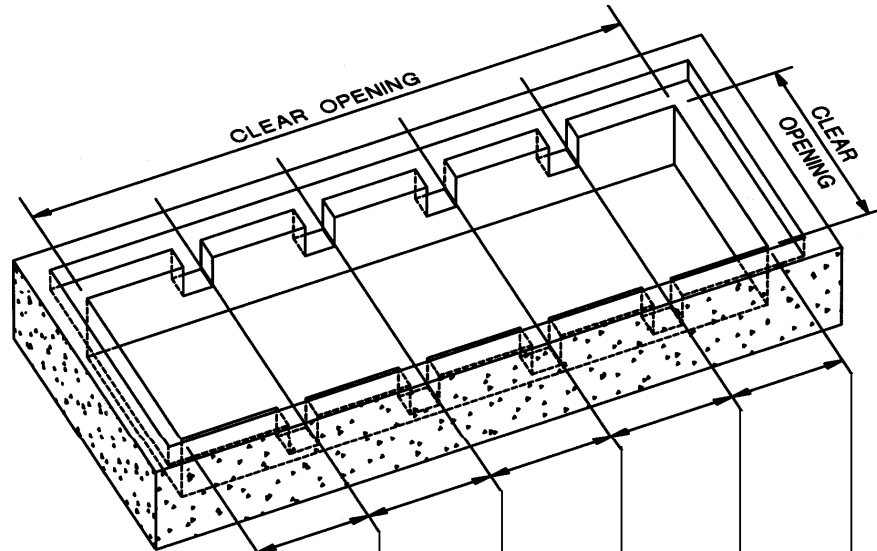
3 BEAMS

CLASS B	B1181 to B1195	660	720	720	660
	B1196 to B1210	660	720	870	660
	B1211 to B1225	660	870	870	660
	B1226 to B1240	810	720	870	810
	B1241 to B1255	810	870	870	810
CLASS C	C3168 to C3181	680	760	760	680
	C3182 to C3195	680	760	910	680
	C3196 to C3209	680	910	910	680
	C3210 to C3223	680	910	910	830
	C3224 to C3237	830	910	910	830
CLASS D	D5204 to D5220	680	760	760	680
	D5221 to D5237	680	760	910	680
	D5238 to D5254	680	910	910	680
	D5255 to D5271	830	910	910	680
	D5272 to D5288	830	910	910	830
CLASS E, F & G	E8131 to E8143	540	630	630	540
	E8144 to E8156	540	630	780	540
	E8157 to E8169	540	780	780	540
	E8170 to E8182	690	630	780	690
	E8183 to E8195	690	780	780	690

FOR CLASS F & G LOAD RATINGS, SUBSTITUTE "F OR G" IN CODE.

IE: E8001 BECOMES F8001 OR G8001

REBATE DETAILS FOR MULTIPLE COVERS BEAM CENTRES FROM CLEAR OPENING

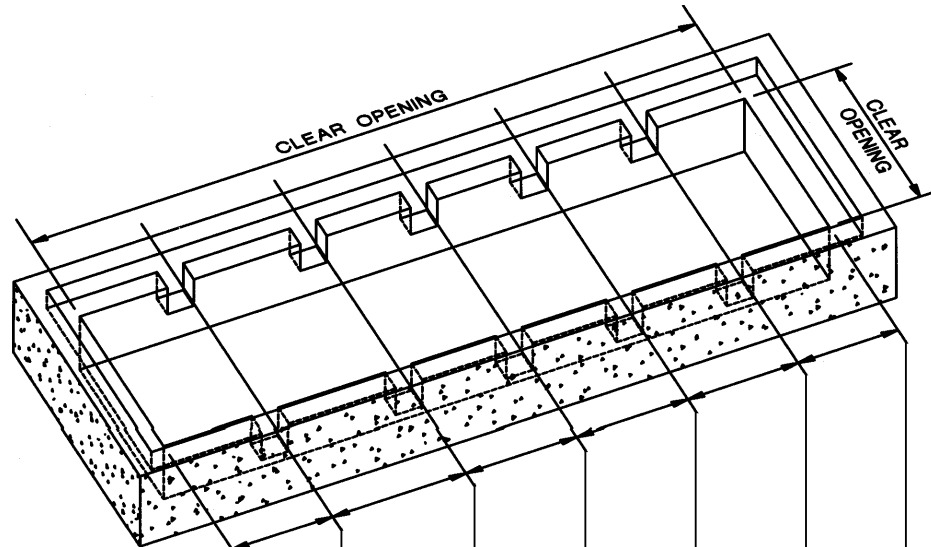


4 BEAMS

CLASS B	B1256 to B1270	660	720	720	720	660
	B1271 to B1285	660	720	870	720	660
	B1286 to B1300	810	720	720	720	810
	B1301 to B1315	660	870	870	870	660
	B1316 to B1330	810	870	720	870	810
	B1331 to B1345	810	870	870	870	810
	B1346 to B1360	810	870	1020	870	810
CLASS C	C3238 to C3251	680	760	760	760	680
	C3252 to C3265	680	760	910	760	680
	C3266 to C3279	830	760	760	760	830
	C3280 to C3293	680	910	910	910	680
	C3294 to C3307	830	910	760	910	830
	C3308 to C3321	830	910	910	910	830
CLASS D	D5289 to D5305	680	760	760	760	680
	D5306 to D5322	680	760	910	760	680
	D5323 to D5339	830	760	760	760	830
	D5340 to D5356	680	910	910	910	680
	D5357 to D5373	830	910	760	910	830
	D5374 to D5390	830	910	910	910	830
CLASS E, F & G	E8196 to E8208	540	630	630	630	540
	E8209 to E8221	540	630	780	630	540
	E8222 to E8234	690	630	630	630	690
	E8235 to E8247	540	780	780	780	540

FOR CLASS F & G LOAD RATINGS, SUBSTITUTE "F OR G" IN CODE.
IE: E8001 BECOMES F8001 OR G8001

REBATE DETAILS FOR MULTIPLE COVERS BEAM CENTRES FROM CLEAR OPENING



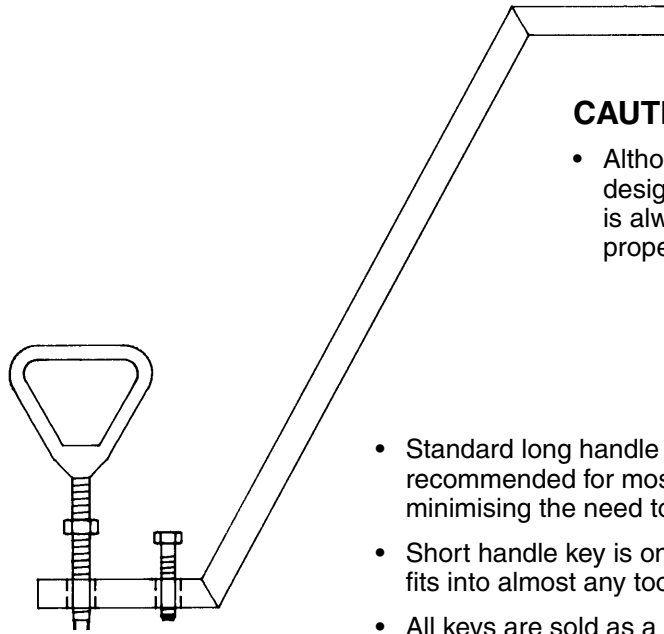
5 BEAMS

CLASS B	B1361 to B1375	810	720	720	720	720	810
	B1376 to B1390	660	720	870	870	870	660
	B1391 to B1405	660	870	870	870	870	660
	B1406 to B1420	810	720	870	870	870	810
	B1421 to B1435	810	870	870	870	870	810
CLASS C	C3322 to C3335	680	760	910	760	760	680
	C3336 to C3349	830	760	760	760	760	830
	C3350 to C3363	680	760	910	910	910	680
	C3364 to C3377	680	910	910	910	910	680
	C3378 to C3391	830	910	760	910	910	830
	C3392 to C3405	830	910	910	910	910	830
CLASS D	D5391 to D5407	680	760	760	760	760	680
	D5408 to D5424	680	760	910	760	760	680
	D5425 to D5441	830	760	760	760	760	830
	D5442 to D5458	680	760	910	910	910	680
	D5459 to D5475	680	910	910	910	910	680
	D5476 to D5492	830	910	760	910	910	830
	D5493 to D5509	830	910	910	910	910	830
CLASS E, F &	E8248 to E8260	540	630	630	630	630	540
	E8261 to E8273	540	630	780	630	630	540
	E8274 to E8286	690	630	630	630	630	690
	E8287 to E8299	540	780	630	780	780	540
	E8300 to E8312	540	780	780	780	780	540

FOR CLASS F & G LOAD RATINGS, SUBSTITUTE "F OR G" IN CODE.

IE: E8001 BECOMES F8001 OR G8001

LIFTING KEYS FOR GASTIGHT ACCESS HATCHES

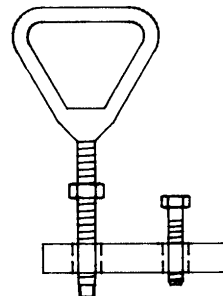


**Long handle
lifting key model
ISLKL.**

CAUTION:

- Although Mascot's lifting keys are designed to engage covers securely, it is always advised that sturdy gloves and proper work boots are worn.

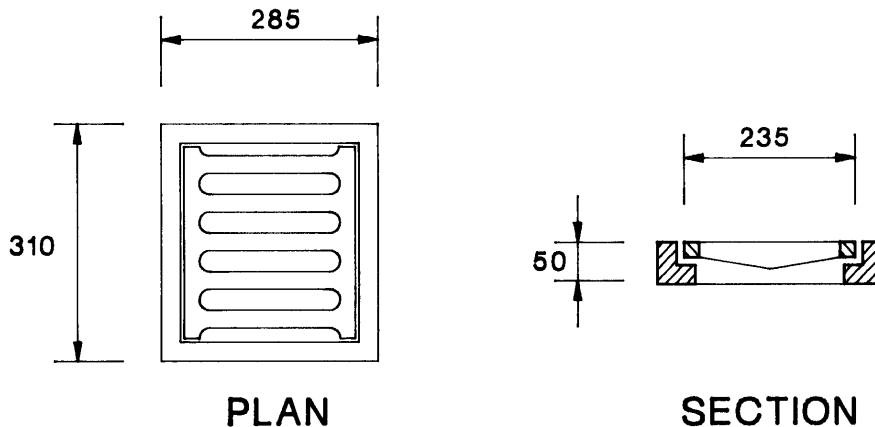
- Standard long handle key is recommended for most lifting situations, minimising the need to bend during lifting.
- Short handle key is only 200mm long and fits into almost any tool box.
- All keys are sold as a pair. Singles available on request.



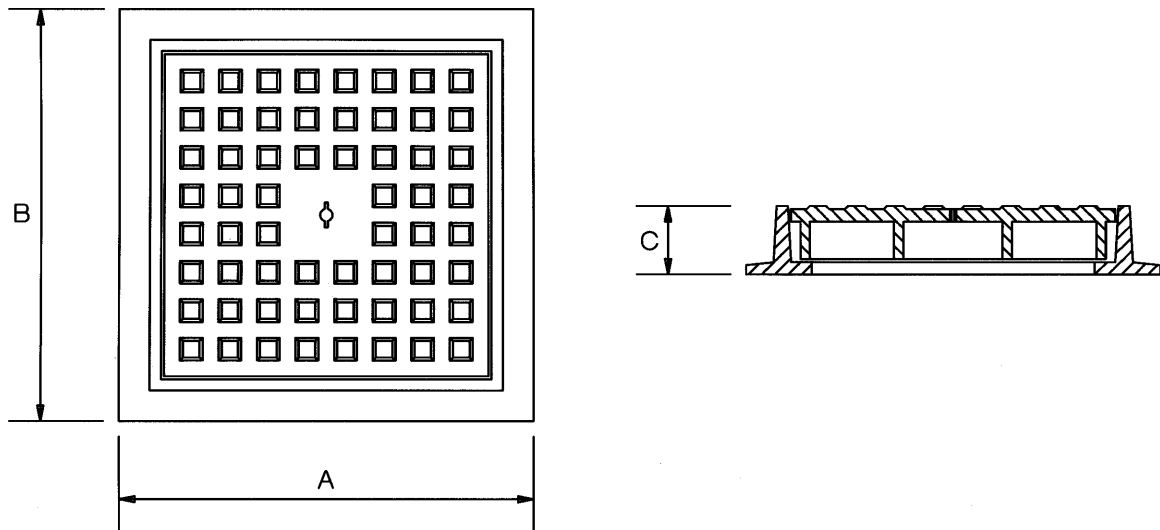
**Short handle
lifting key
model ISLKS.**

NOTE: Always remember to thoroughly clean seating faces of cover and frame, then apply a heavy moly grease before replacing.

BRIDGE SCUPPER FRAME AND GRATE OR FRAME AND COVER



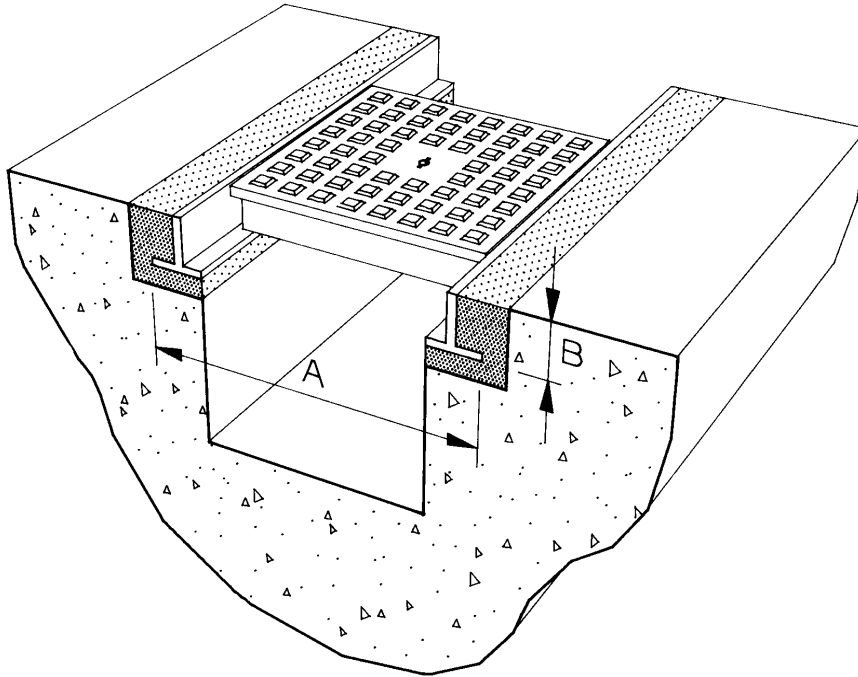
ACCESS COVERS AND FRAMES SOLID TOP (non-gastight)



PRODUCT CODE	CLEAR OPENING	LOAD RATING	A	B	C
CSC:12:H	300 mm Square	D	450 mm x	450 mm x	75 mm
CSC:15:H	390 mm Square	D	450 mm x	450 mm x	75 mm
CSC:18:EH	450 mm Square	E – F – G	660 mm x	660 mm x	110 mm
CSC:24:EH	600 mm Square	E – F – G	810 mm x	810 mm x	110 mm
CSC:30:EH	750 mm Square	E – F – G	960 mm x	960 mm x	110 mm
CSC:36:L	900 mm Square	B	1040 mm x	1040 mm x	75 mm
CSC:36:EH	900 mm Square	E – F – G	1220 mm x	1220 mm x	150 mm
CSC:2216:M	560 mm x 410 mm	C	710 mm x	560 mm x	75 mm
CSC:2234:M	560 mm x 860 mm	C	710 mm x	1010 mm x	75 mm

• FULL LOAD RATING DEFINITIONS APPEAR ON PAGE 29.

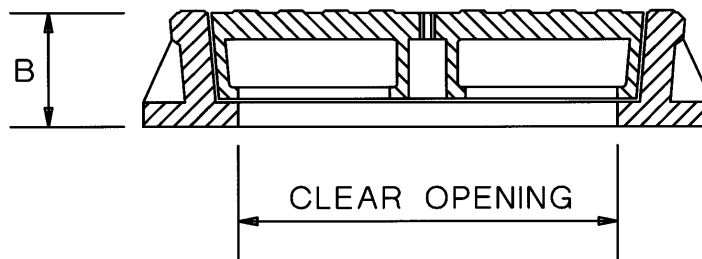
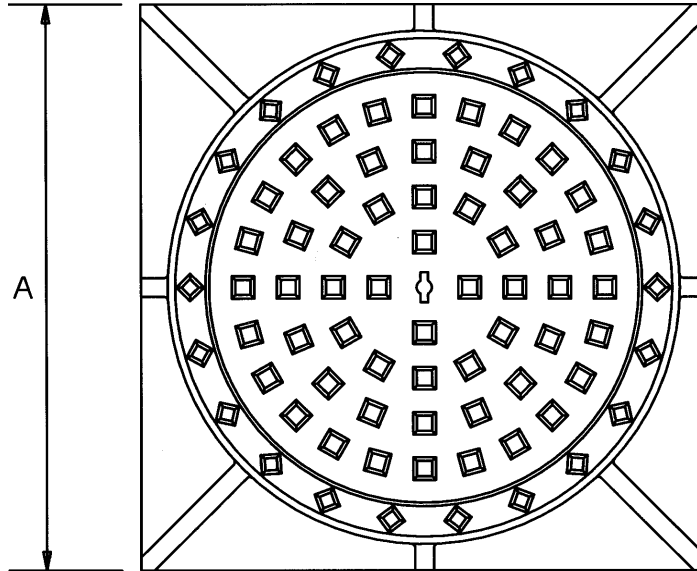
SOLID TOP TRENCH COVERS (non-gastight)



	PRODUCT CODE	OPENING SIZE (mm)	A (mm)	B (mm)
CLASS B	SC16:L	400	560	75
	SC22:L	550	710	75
	SC36:L	900	1040	75
CLASS D	SC12:H	300	450	75
	SC16:H	400	460	100
	SC18:H	450	660	110
	SC24:H	600	810	110
	SC30:H	750	960	110
	SC36:H	900	1220	150

• FULL LOAD RATING DEFINITIONS APPEAR ON PAGE 29.

ROUND ROAD ACCESS COVERS AND FRAMES SOLID TOP (non-gastight)

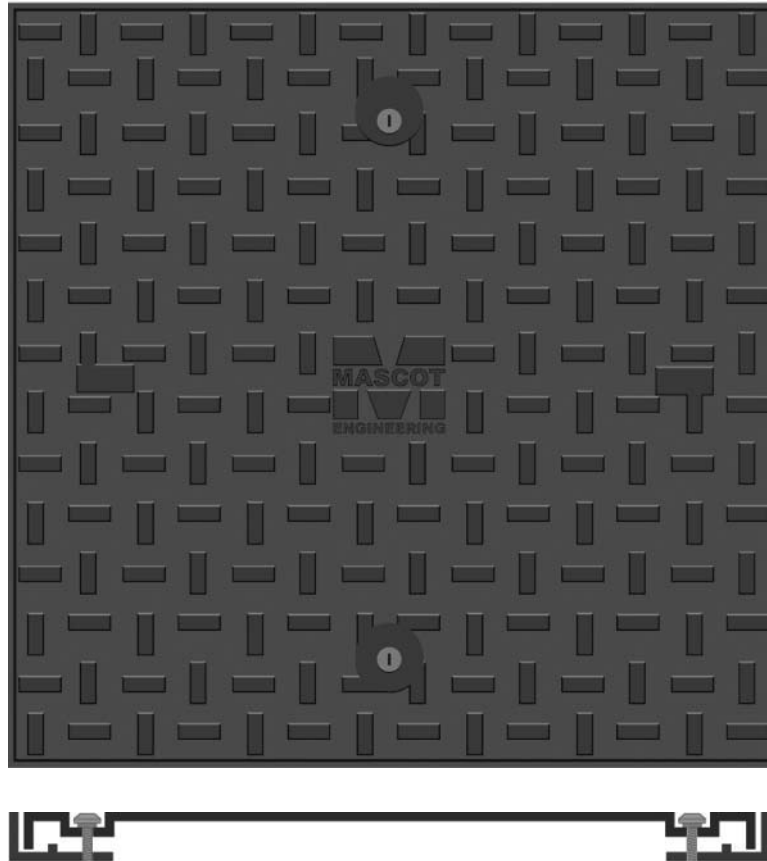


PRODUCT CODE	CLEAR OPENING	LOAD RATING	DIMENSIONS	
			A	B
RM20:S10:EH	500 mm Diam.	E – F – G	750 mm	150 mm
RMCCS2	500 mm Diam.	E – F – G	750 mm	150 mm
RMCCS3	500 mm Diam.	E – F – G	1200 mm	150 mm

NOTE: ITEMS SUPPLIED MAY DIFFER FROM THE ABOVE DIMENSIONS DUE TO CONTINUAL PRODUCT IMPROVEMENTS

- RMCCS2 & RMCCS3 ARE PERFORATED
- FULL LOAD RATING DEFINITIONS APPEAR ON PAGE 29.

SOLID TOP CAST IRON COVER & GMS FRAME



Designed to drop into the rebate of Mascot GRC Pits

CODE	CLEAR OPENING	LOAD RATING	DETAILS
DS0STC	300 x 300	Class B	Cover only
DS1STC	375 x 375	Class B	Cover only
DS2STC	450 x 450	Class C	Cover & Frame
DS3STC	600 x 600	Class C	Cover & Frame
DS4STC	600 x 900	Class C	Cover & Frame
DS5STC	900 x 900	Class C	Cover & Frame
DS6STC	1200 x 1200	Class B	Cover & Frame

Simply place into the rebate & fix with 2-part epoxy. Covers bolt to the frame for simple & secure access



LOAD RATING DATA

Design loads for access covers manufactured in accordance with Australian Standard AS3996-1992.

CLASS OF COVER	A	B	C	D	E	F	G
ULTIMATE LOADING IN KN	10	80	150	210	400	600	900

CLASSIFICATIONS

Classifications for AS3996-1992 are as follows:

CLASS 'A'

For use in pedestrian precincts inaccessible to motor vehicles.

CLASS 'B'

For use on footpaths.

CLASS 'C'

EITHER:

- (i) For use in areas normally for pedestrians and only occasionally open to vehicles for delivery or cleaning purposes or in an emergency, where wheel loads will not exceed 3.7 tonnes or,
- (ii) For use in carriage ways or minor residential roads and carrying slow moving commercial vehicles where wheel loads will not exceed 7.5 tonnes.

CLASS 'D'

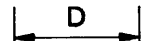
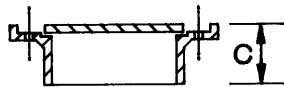
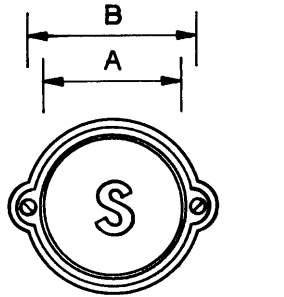
EITHER:

- (i) For unrestricted use in the carriage ways of arterial and other roads carrying fast moving heavy vehicles where the wheel loads will not exceed 5.2 tonnes or,
- (ii) For restricted use in areas trafficked by slow moving heavy vehicles where wheel loads will not exceed 10.5 tonnes.

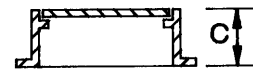
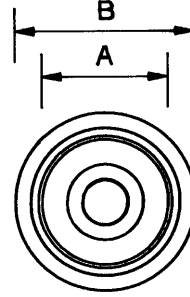
CLASSES 'E', 'F' and 'G'

Generally not for use on public roads, but for areas used by vehicles imposing particularly high wheel loads, such as airports and container terminals.

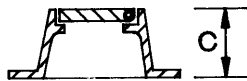
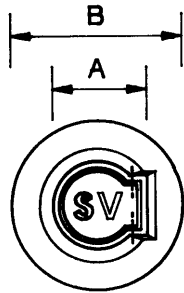
PATH VALVE BOXES



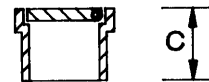
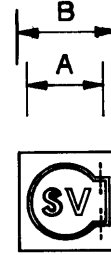
C6GTS



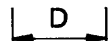
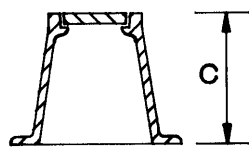
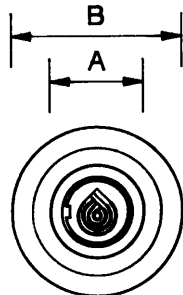
FPC



SVH100



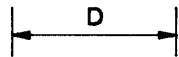
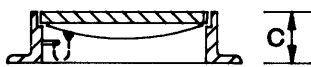
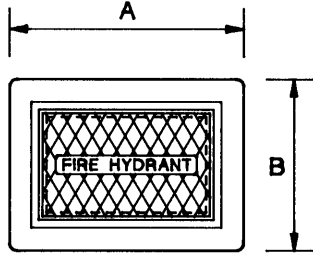
PBW



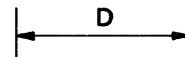
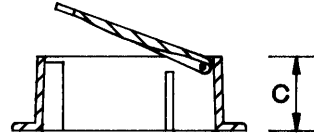
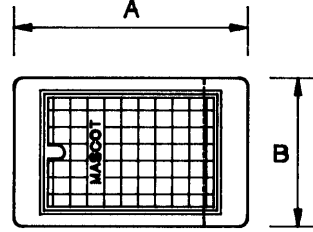
SVWA

PRODUCT CODE	A	B	C	D
C6GTS	180	160	60	145
SVH100	170	298	120	100
SVWA	165	297	230	100
FPC	260	300	50	230
PBW	100	165	90	90

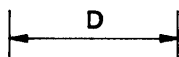
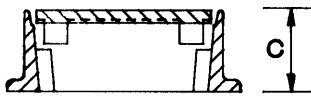
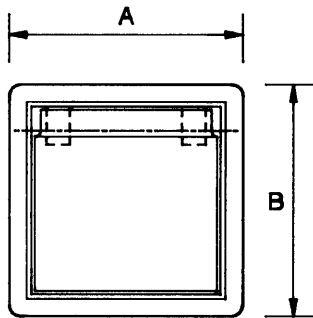
PATH VALVE BOXES



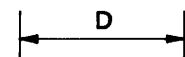
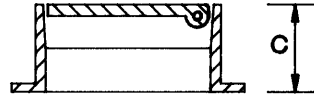
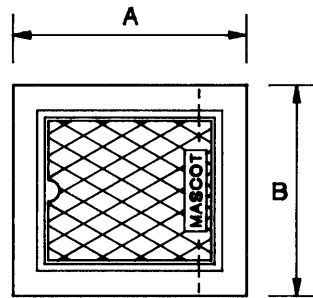
HBWA



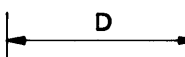
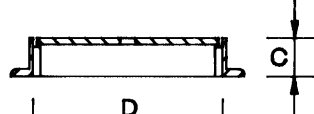
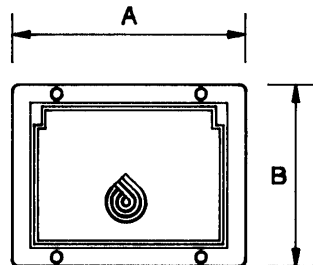
96HTB



SCWA



4PB



HMWA

PRODUCT CODE	A	B	C	D INTERNAL
HBWA	460	340	100	320x200
SCWA	200	200	70	120x115
96HTB	305	225	100	230x150
4PB	170	155	65	120x100
HMWA	524	410	90	430x300