

# CROSS FLOW INTERCEPTOR UNIT (CFI)

## OIL / WATER / SOIL COALESCING PLATE SEPARATOR

### GENERAL NOTES:

AUSTRALIAN DESIGNED AND MANUFACTURED, THE MASCOT CFI UNIT IS ONE OF THE MOST EFFICIENT ON THE MARKET. UNIT CAN BE SUPPLIED IN TWO STANDARD MODELS AND ARE CAPABLE OF REDUCING THE OIL CONTENT IN THE EFFLUENT TO LESS THAN 10 PART PER MILLION:

### CROSS FLOW UNITS

1.	CFI15	1500 LITRE CFI UNIT
1.	CFI30	3000 LITRE CFI UNIT

ABOVE CFI UNITS COME COMPLETE WITH CFI UNIT, PLATE PACK, STAND & COVERS

### PUMPS

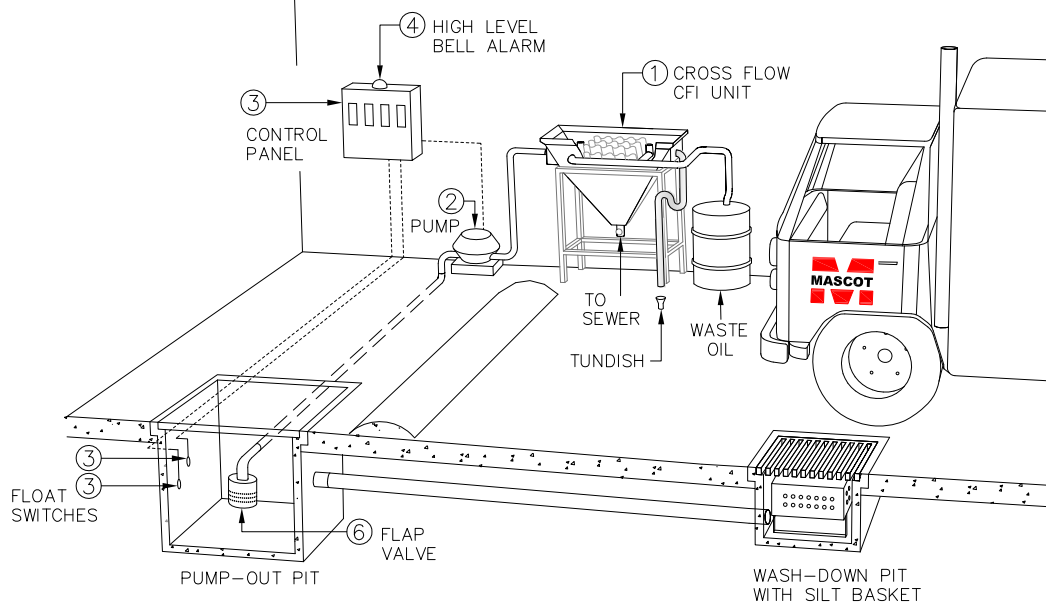
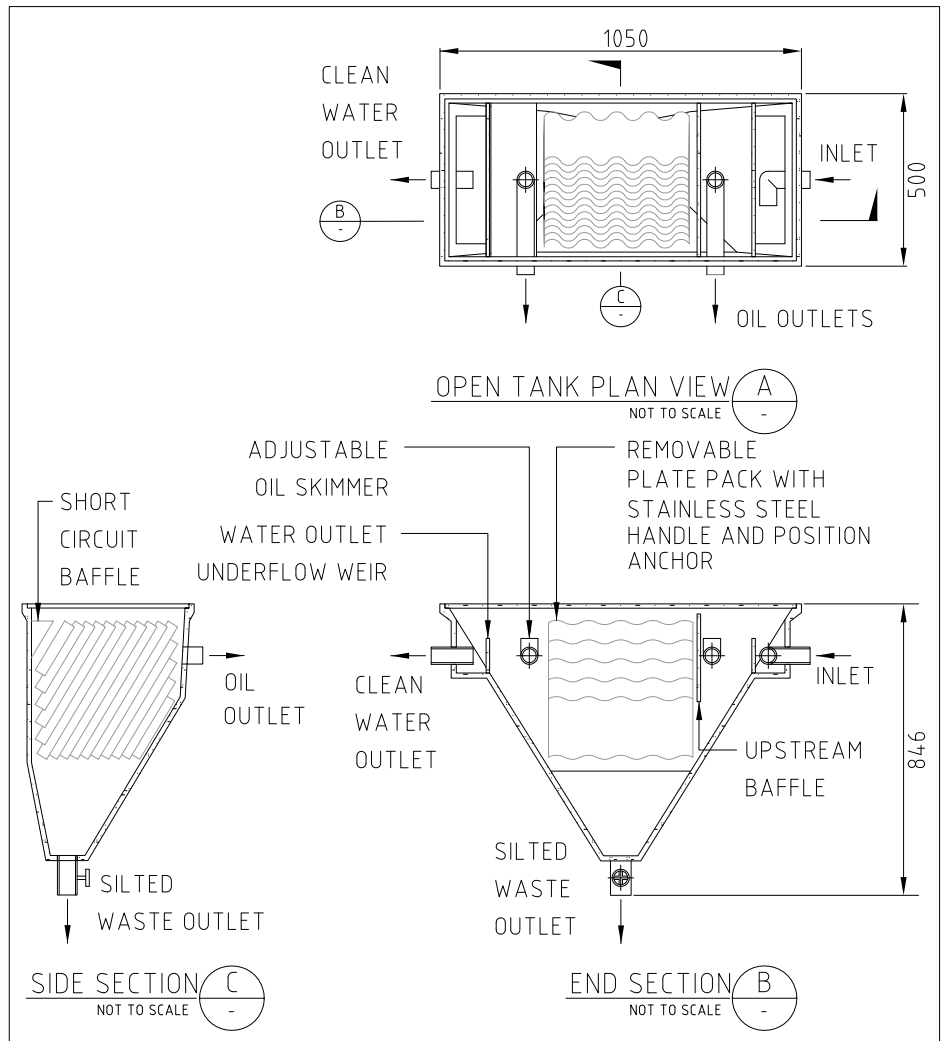
2.	CFI15ASM	PUMP FOR CFI15
2.	CFI30ASM	PUMP FOR CFI30

ABOVE PUMPS ARE DIAPHRAGM 240VOLT (NON FLAME PROOF), 415 VOLT AND FLAME PROOF OPTIONS ARE AVAILABLE.

### ACCESSORIES

3.	CFICP	CONTROL PANEL
4.	CFIBA	BELL ALARM
5.	CFIFS	FLOAT SWITCH (ONE ONLY)
6.	CFIFV15	FLAP VALVE FOR CFI15
6.	CFIFV30	FLAP VALVE FOR CFI30

WASH DOWN AND PUMP-OUT PITS ARE ALSO AVAILABLE IN OUR UNIQUE GLASS REINFORCED CONCRETE GRC FOR EASY INSTALLATION.



## RECOMMENDED MASCOT ENGINEERING CROSS FLOW INTERCEPTOR SETUP

ALL DIMENSIONS ARE APPROXIMATE AND IN mm UNLESS OTHERWISE NOTED

© Copyright



ph:1300 885 295  
melbourne@mascoteng.com.au  
www.mascoteng.com.au

Mascot Engineering Melbourne  
30 Earl Street,  
Airport West VIC 3042

PRODUCT DESCRIPTION:  
GRC CROSS FLOW  
INTERCEPTOR UNIT

PRODUCT CODE:

AS ABOVE

APPROVED:  
N.T

DRAWN BY:  
M.Z

TOTAL WEIGHT OF PRODUCT:

AS ABOVE

SCALE:  
NOT TO SCALE

DATE:  
07.04.2010

DRAWING NO:

ME-VIC-TW-CFI-33

REVISION:  
B