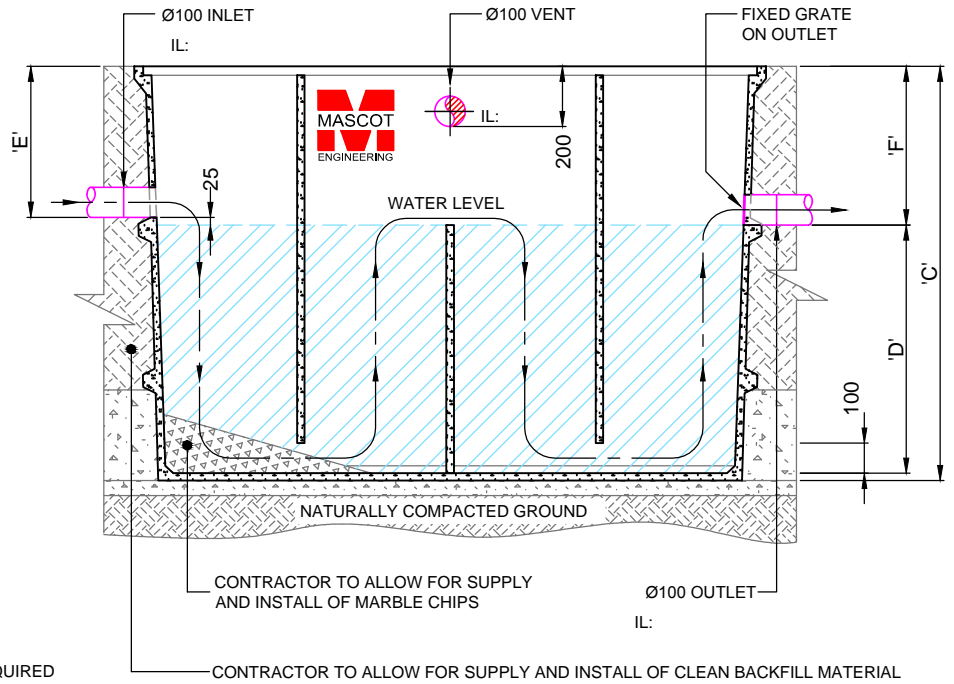


END SECTION

SCALE 1:25



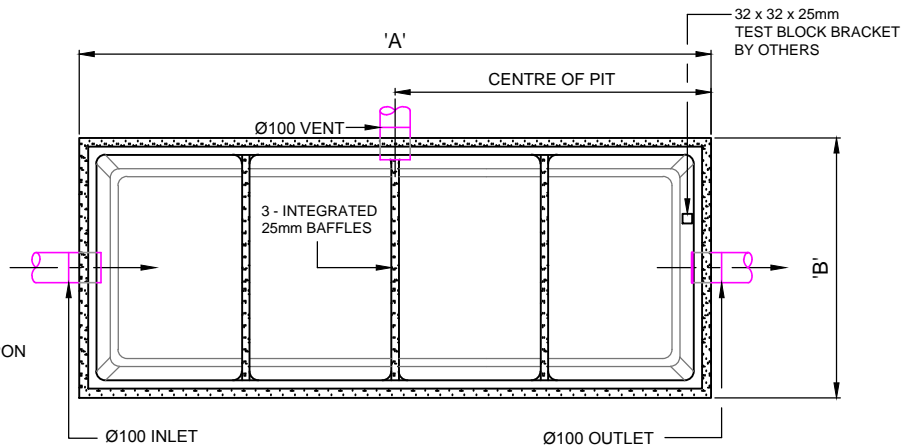
SIDE SECTION

SCALE 1:25

4:1 SAND CEMENT BED 50mm HIGH REQUIRED
 4:1 SAND CEMENT BACKFILL MIN 300mm HIGH FOR STANDARD INSTALLATION.
 -FOR DEEPER INSTALLATIONS REFER TO INSTRUCTIONS
 -FOR WATER CHARGED GROUND REFER TO YOUR PROJECT STRUCTURAL ENGINEER.

PRODUCT NOTE:

1. TESTED AND APPROVED FOR INSTALLATIONS UP TO 5000mm DEEP.
2. 300mm RISERS AVAILABLE.
3. LARGE RANGE OF CONCRETE SURROUNDS AND GAS TIGHT COVERS TO SUIT ALL LOAD RATINGS.
4. MPA RATING FOR GRC - 60 mpa @ 28 DAYS.
5. AVAILABLE EXTRAS:
 -STEP IRONS
 -SUPPORT FRAME & WORK PLATFORMS FOR ABOVE GROUND INSTALLATIONS.
6. CUSTOM FEATURES TO THIS TANK ARE AVAILABLE UPON REQUEST.
7. OTHER PVC PIPE SIZES AVAILABLE UPON REQUEST
8. INSTALLATION INSTRUCTIONS MUST BE FOLLOWED.
9. COVER WILL ADD TO OVERALL DEPTH.
10. INTERNAL SURFACES OF THE TANK ARE COATED WITH ACID RESISTANT TAR EPOXY PAINT



OPEN TANK PLAN VIEW

SCALE 1:25

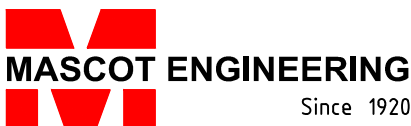
PRODUCT CODE	CAPACITY (L)	A	B	C	D	E	F	MASS (KG)
VANT1100	1100	2090	860	1370	845	500	525	490
VANT1500	1500	2090	860	1370	995	350	375	510
VANT2000	2000	2090	860	1670	1295	350	375	650
VANT2500	2500	2090	860	1970	1595	350	375	750

SPECIFICATION

Glass Reinforced Concrete Acid Neutraliser Tank must be free of steel reinforcement to prevent corrosion.
 Acid Neutraliser to be Mascot Engineering GRC litre, model number VANT complete with Gastight Access Covers to suit Class to AS3996.
 Products to be installed as per the manufacturers installation instructions

AUTHORISED FOR USE IN VICTORIA

© Copyright



PRODUCT DESCRIPTION:
VIC ACID NEUTRALISER TANK

ph: 1300 885 295
 fax: 1300 885 296
 email: sales@mascoteng.com.au
 www.mascotengineering.com.au

SCALE:

1:25

REVISION:

A

DRAWING NO:

TW.VIC.VANT.001